

MODEL SELECTION

| NOMINAL VALUE (VDC) | 1500 WATT OUTPUT | | 2000 WATT OUTPUT | | 2500 WATT OUTPUT | | 3000 WATT OUTPUT | |
|---------------------|-----------------------|-------------|------------------------|-------------|-----------------------|-------------|-----------------------|-------------|
| | MAXIMUM CURRENT (ADC) | MODEL | MAXIMUM CURRENT (ADC) | MODEL | MAXIMUM CURRENT (ADC) | MODEL | MAXIMUM CURRENT (ADC) | MODEL |
| 5V | 300A | NTDM-5-300 | CONSULT FACTORY | | | | | |
| 12V | 125A | NTDM-12-125 | | | | | | |
| 15V | 100A | NTDM-15-100 | | | | | | |
| 24V | 62A | NTDM-24-62 | 84A | NTDM-24-84 | 104A | NTDM-24-104 | 125A | NTDM-24-125 |
| 28V | 54A | NTDM-28-54 | 72A | NTDM-28-72 | 89A | NTDM-28-89 | 107A | NTDM-28-107 |
| 48V | 31A | NTDM-48-31 | 42A | NTDM-48-42 | 52A | NTDM-48-52 | 62A | NTDM-48-62 |
| 110V | 14A | NTDM-110-14 | 18A | NTDM-110-18 | 22A | NTDM-110-22 | 27A | NTDM-110-27 |

Note: 2000 Watts - 3000 Watts Require 230 VAC Input.

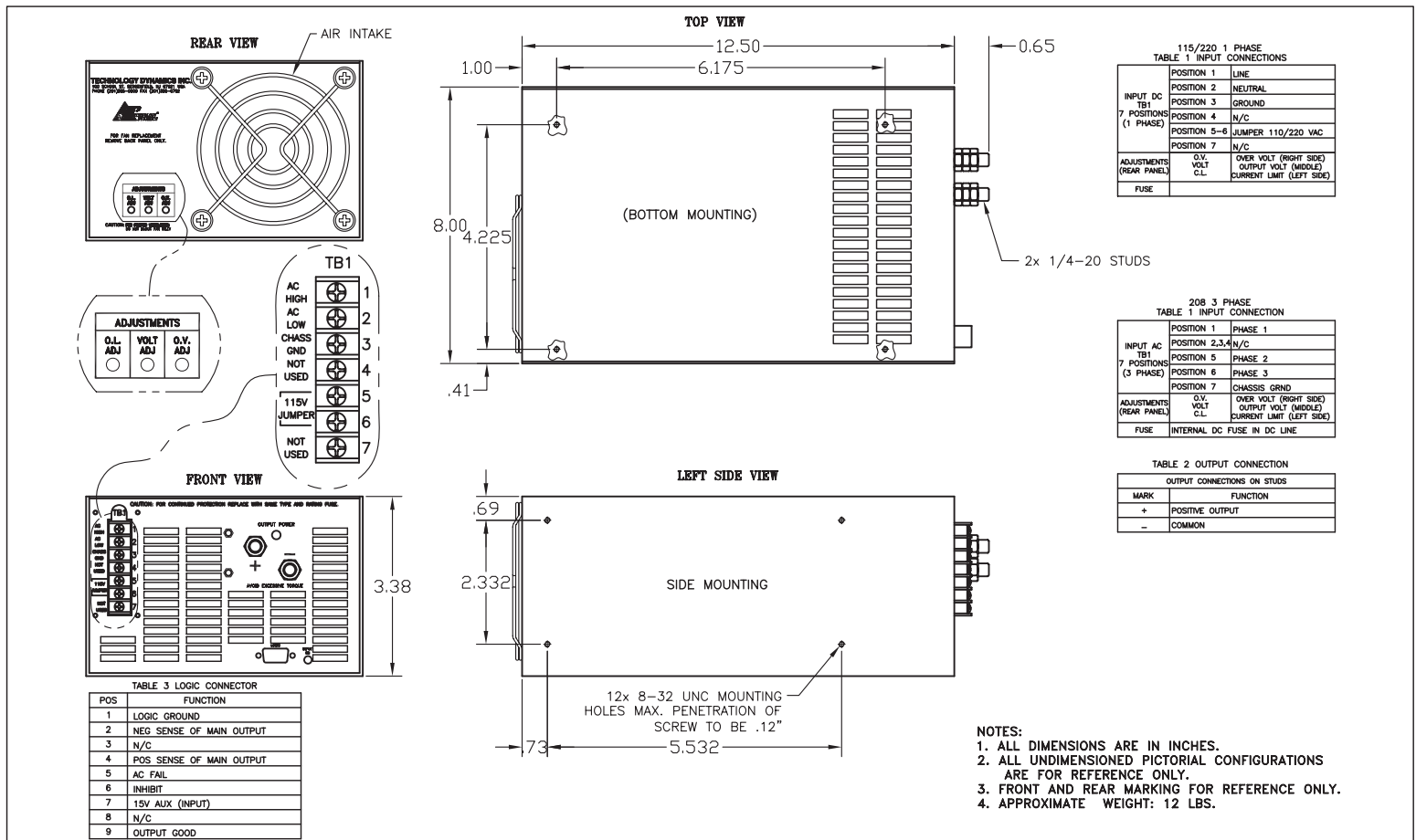
Note: Other Voltages and Currents Available, Contact the Factory.

OPTION DESIGNATIONS

| | | | |
|-------|-------------------------|---------|--------------------------------|
| - PFC | Power Factor Correction | - CC | Conformal Coating |
| - PAR | Parallel Operation | - 400Hz | 400Hz Operation |
| - 3P | 3 Phase Input | - MIL | Ruggedized for Shock/Vibration |
| - RK | Rack Mount | - ORD | Redundant Operation |
| - HS | Hot Swap | - PNL | Panel Mount |

Note: Other Option Available, Contact the Factory.

MECHANICAL OUTLINE



APPLIED POWER CONVERSION
division of

TECHNOLOGY DYNAMICS INC.

100 School Street, Bergenfield, NJ 07621

Phone: (201) 385-0500, Fax: (201) 385-0702

Website: www.theallpower.com