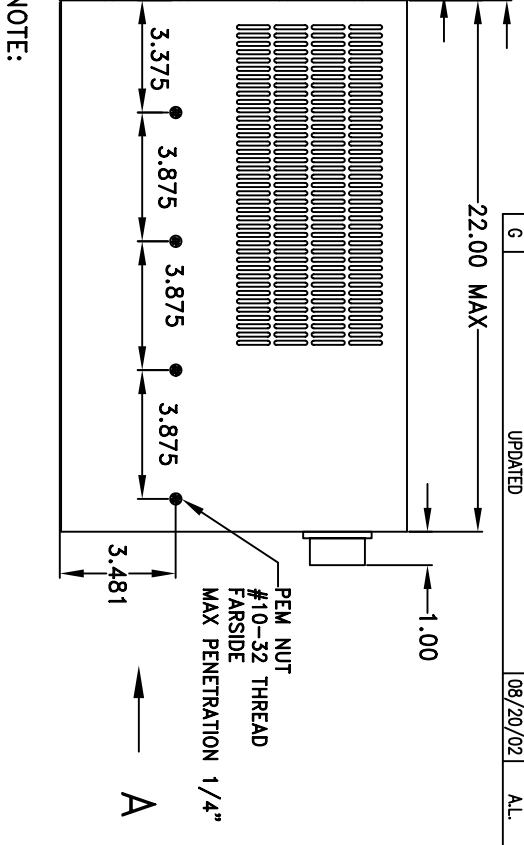
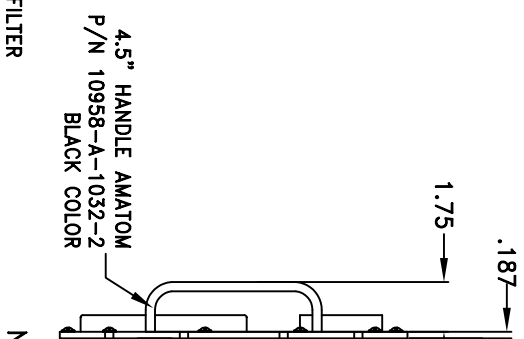
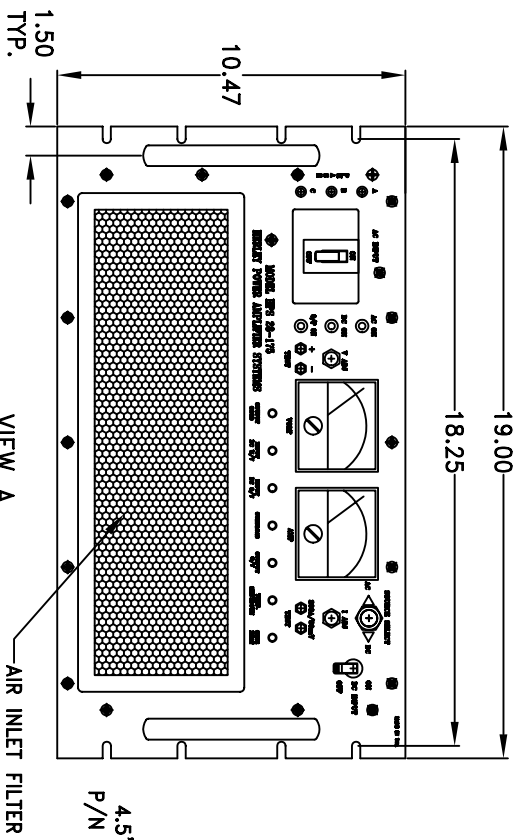


# OUTLINE DRAWING 28 V 5 KW POWER SUPPLY

REVISIONS			
LTR	DESCRIPTION	DATE	APPROVED
F	CHANGED POSITIONS OF J2 & J3	04/04/02	A.L.
G	UPDATED	08/20/02	A.L.



- NOTE:
- HOLE PATTERN ON THE SIDE WALL IS SUITABLE FOR GENERAL DEVICES SLIDE #CTS-122
  - FRONT SURFACE AND EDGES ARE PAINTED IN ACCORDANCE WITH MIL-E-15090C, FORMULA III, TYPE III, COLOR NO. 26307 PER FED-STD-595B

## CONNECTORS PIN DESIGNATION

INPUT AC		OUTPUT DC		INPUT DC	
MS3102R24-10P		MS3102R36-5S		MS3102R36-5P	
PIN A	PHASE A INPUT	PIN A	+28 V	PIN A	+28 V
PIN B	PHASE B INPUT	PIN B	+28 V	PIN B	+28 V
PIN C	PHASE C INPUT	PIN C	COM	PIN C	RET
PIN D	NEUTRAL	PIN D	COM	PIN D	RET
PIN E	CHASSIS GND				

## DC/CONTROL

MS3102R20-7S	
PIN A	+28 OUTPUT
PIN B	+28 OUTPUT
PIN C	CONTROL
PIN D	CONTROL
PIN E	POWER GOOD
PIN F	CONTROL
PIN G	COM
PIN H	COM

I/O SPECIFICATION	
INPUT	220/400V 3Ø OR 22-32VDC
OUTPUT	28VDC 170A MAX

HERLEY

THIS DRAWING CONTAINS PROPRIETARY INFORMATION AND MAY NOT BE REPRODUCED WITHOUT THE PERMISSION OF NOVA ELECTRIC.

TECHNOLOGY DYNAMICS INC.  
100 SCHOOL STREET  
BERGENFIELD, N.J. 07621-2915

DRAWN N.T. DATE 11/17/01

TITLE: DUAL INPUT 28VDC 5KW POWER SUPPLY

CHECKED DATE

SIZE B SCALE 1

APPROVED A.L. DATE 11/17/01

77010078 SHEET 1 OF 1